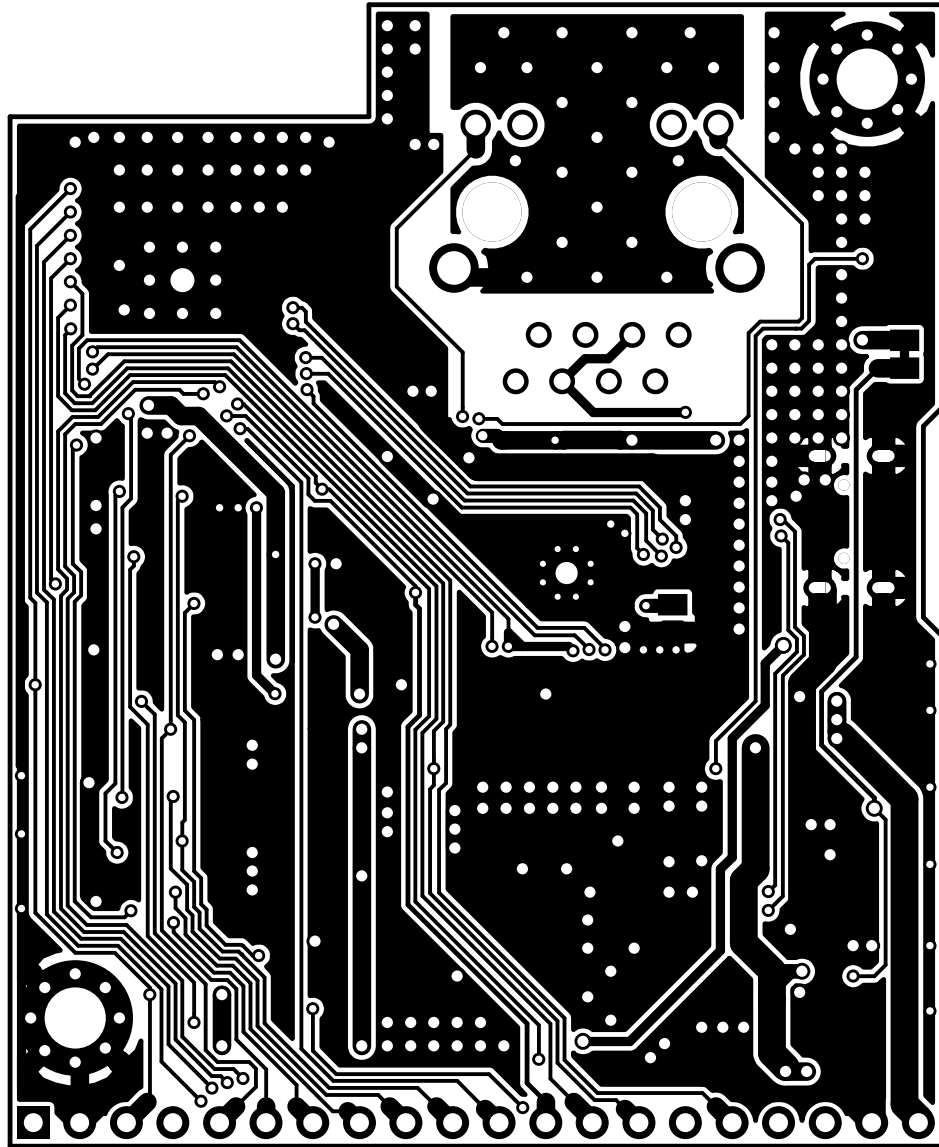
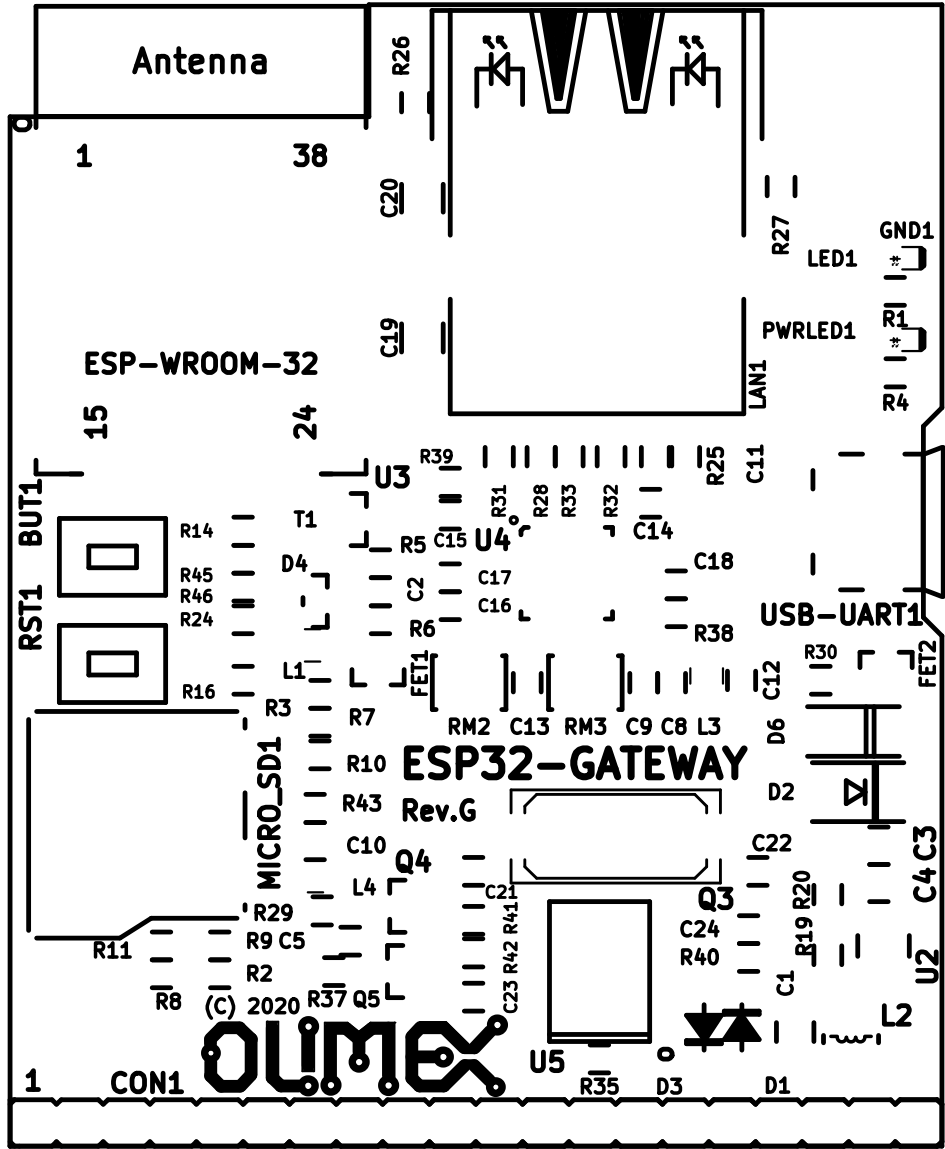


2 Layers PCB
Dimensions: 2.0x2.45" (50.80x62.23mm)





FED_TEST

ESP32-GATEWAY

<https://www.olimex.com>



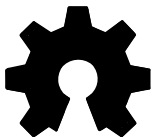
PHY_RST1

RoHS

Compliant



open hardware



+2A	50
GND	
GP120	
GP120	
GP122	
GP12+	
GP1023	
GP1023	
GP1011	
GP1011	
GP1012	
GP1012	
GP101+	
GP1013	
GP1015	
GP10+	
GP105	
GP102	
ESB_TEN	
GND	
+3.2A	1
BIN MVP:	

50

4